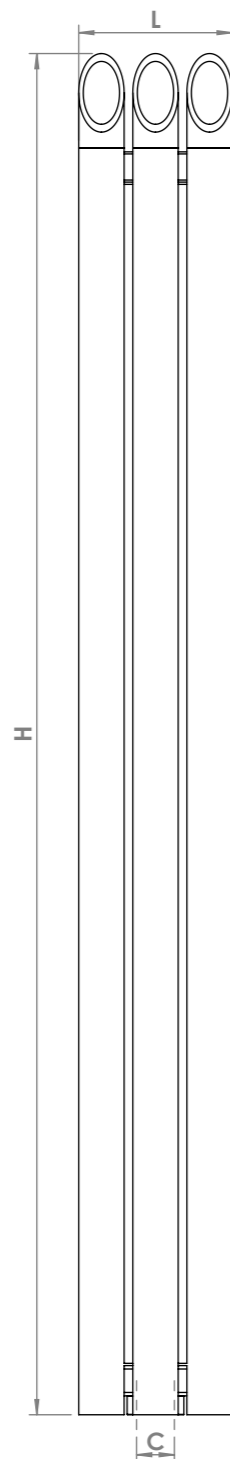
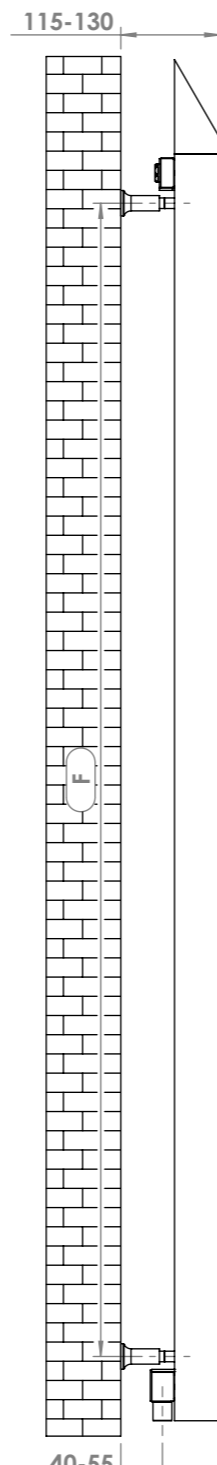


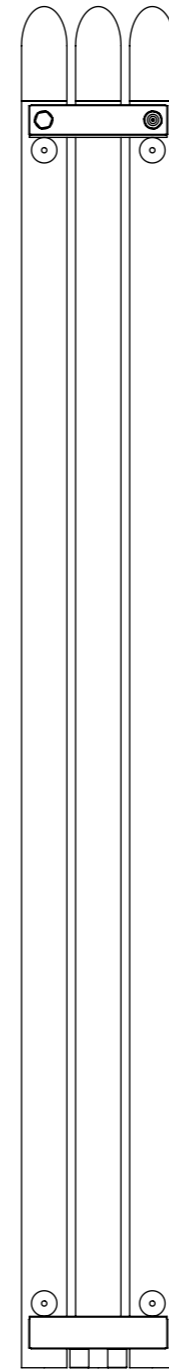
BAMBOO



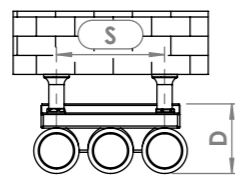
Front View



Side View

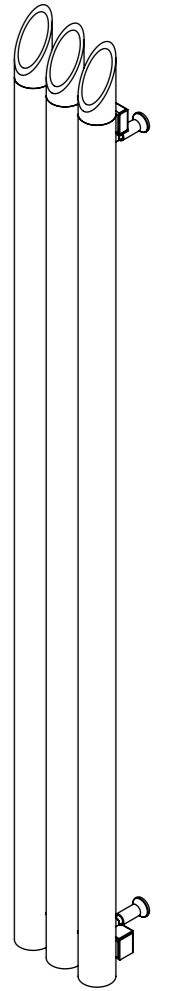
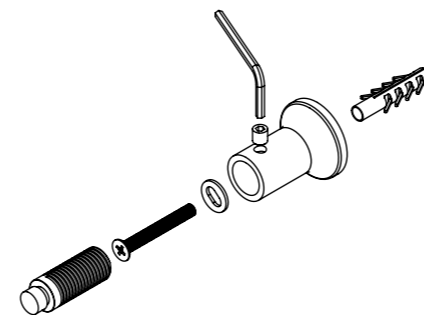
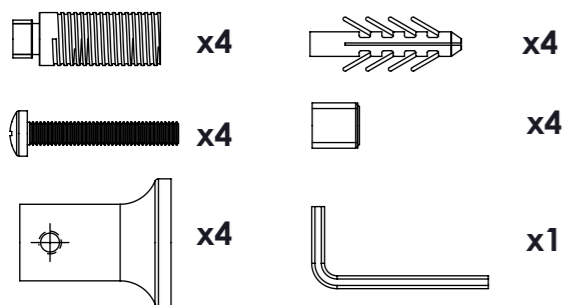


Back View

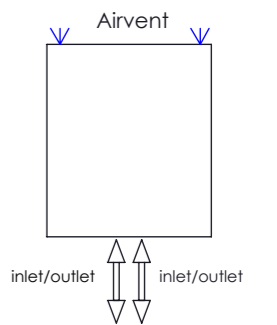


Top View

Installation Accessories:



Plumbing Position:



Vertical mount
 All Dimensions are in mm
 Max.Working Pressure: 10 Bar
 Max.Working Temperature: 95° C
 Inlet / Outlet : 1/2" BSP
 Fuel : E/H/D

Manufacturing Tolerance : - 5 mm

PRODUCT CODE	Height	Length	Depth	Pipe Centres	Bracket Centres	
	H mm	L mm	D mm	C mm	F mm	S mm
BAW118	1800	80	60	170	1525	-
BAW218	1800	130	90	50	1525	70
BAW318	1800	200	90	50	1525	140
BAW418	1800	270	90	50	1525	210
BAW812	1200	550	90	50	925	490