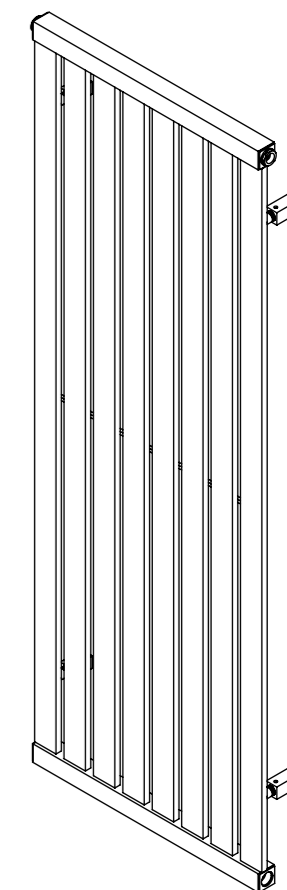
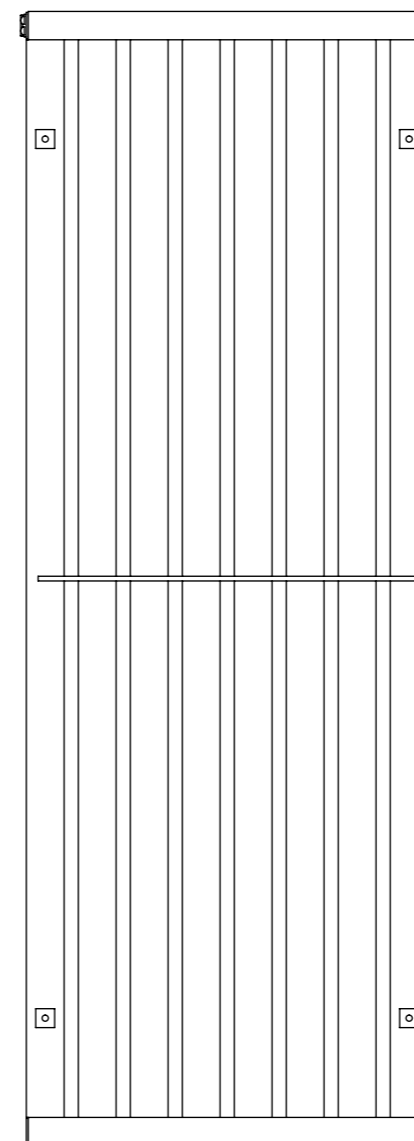
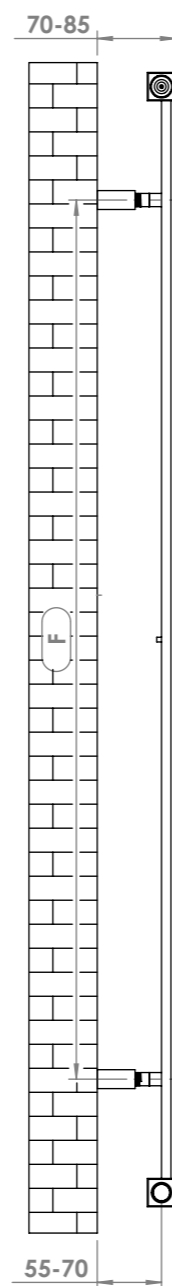
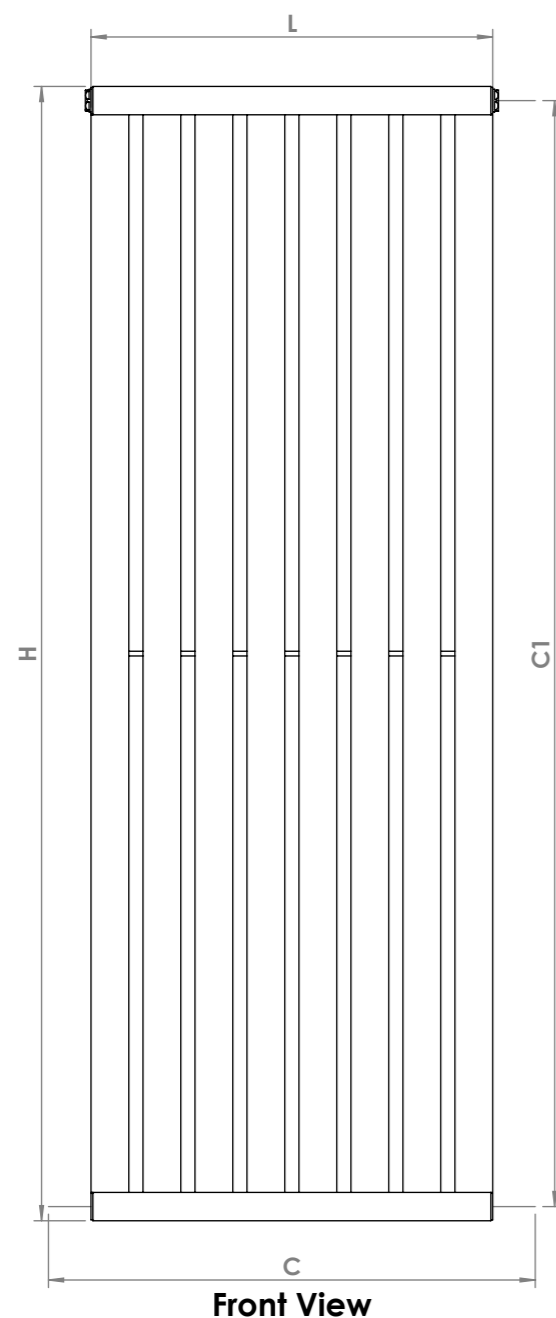
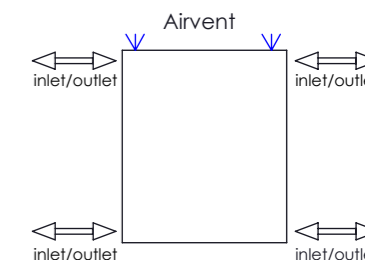


# SUPRA - Single

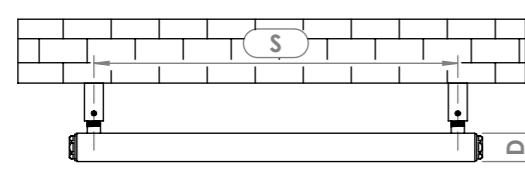


### Plumbing Position:



Vertical / Horizontal Mount  
 All Dimensions are in mm  
 Max. Working Pressure: 10 Bar  
 Max. Working Temperature: 95° C  
 Inlet / Outlet : 1/2" BSP  
 Fuel : E/H/D

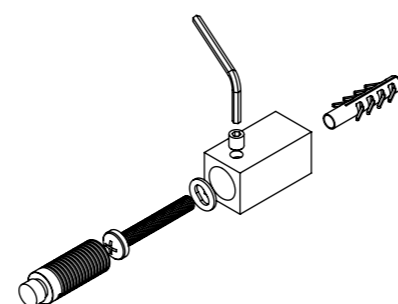
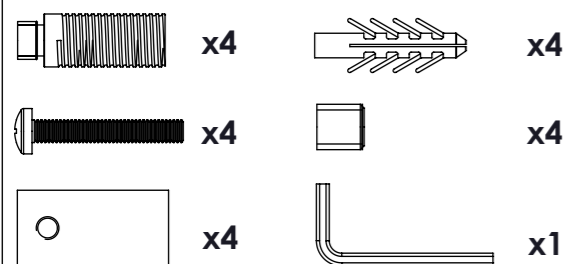
Manufacturing Tolerance : - 5 mm



Side View

Back View

### Installation Accessories:



PRODUCT CODE	Height	Length	Depth	Pipe Centres	Bracket Centres	
	H	L	D	C-C1	F	S
	mm	mm	mm	mm	mm	mm
SUPS63	600	315	30	405-570	330	275
SUPS64	600	425	30	515-570	330	385
SUPS65	600	535	30	625-570	330	495
SUPS67	600	700	30	790-570	330	660
SUPS68	600	810	30	900-570	330	770
SUPS104	1000	425	40	515-970	730	385
SUPS105	1000	535	40	625-970	730	495
SUPS107	1000	700	40	790-970	730	660
SUPS124	1200	425	40	515-1170	930	385
SUPS125	1200	535	40	625-1170	930	495
SUPS127	1200	700	40	790-1170	930	660
SUPS153	1500	315	40	405-1470	1230	275
SUPS154	1500	425	40	515-1470	1230	385
SUPS155	1500	535	40	625-1470	1230	495
SUPS182	1800	205	40	295-1770	1530	165
SUPS183	1800	315	40	405-1770	1530	275
SUPS184	1800	425	40	515-1770	1530	385
SUPS185	1800	535	40	625-1770	1530	495
SUPS202	2000	205	40	295-1970	1730	165
SUP S203	2000	315	40	405-1970	1730	275
SUPS204	2000	425	40	515-1970	1730	385