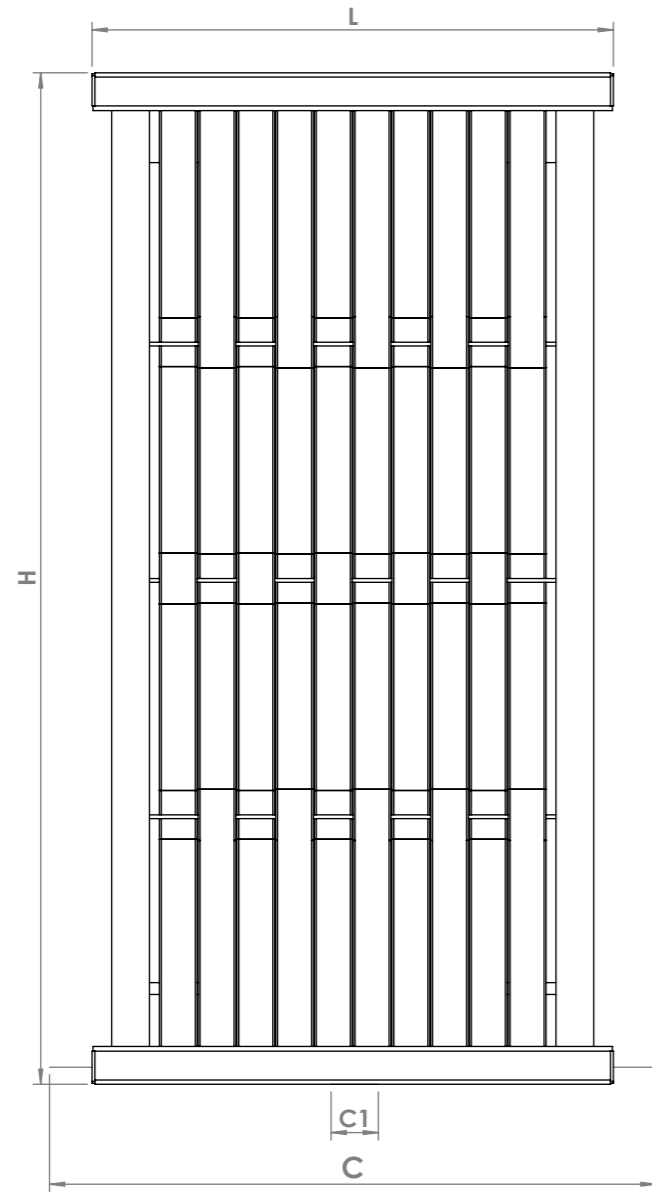
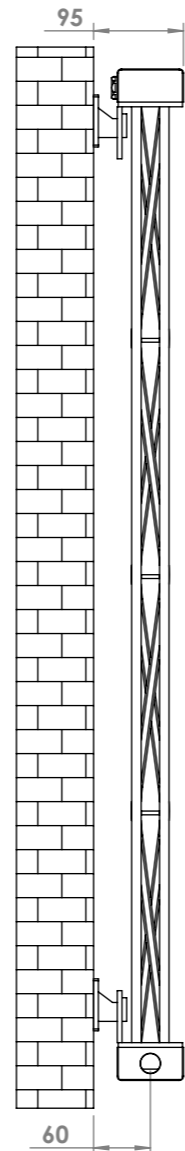


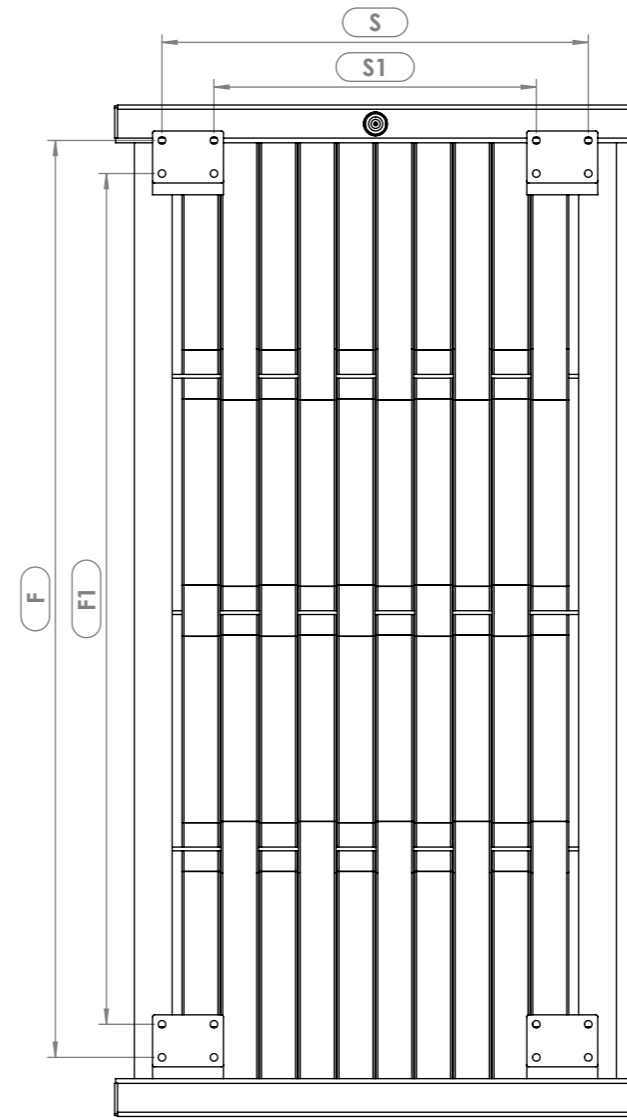
WAVE-Vertical



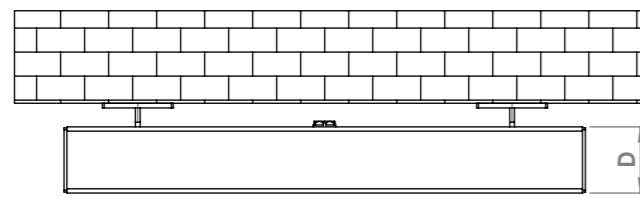
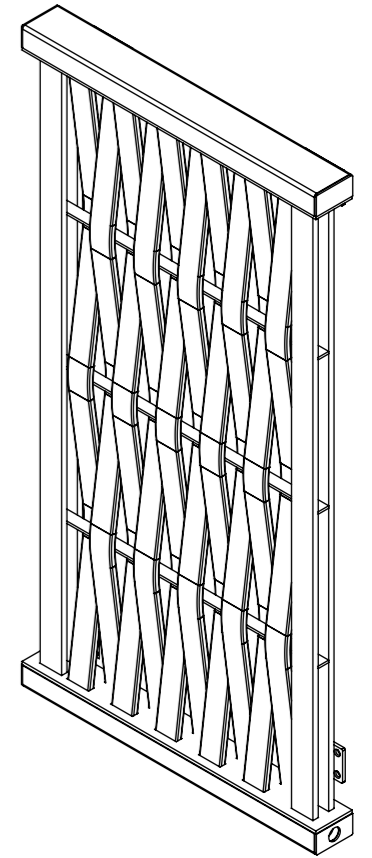
Front View



Side View

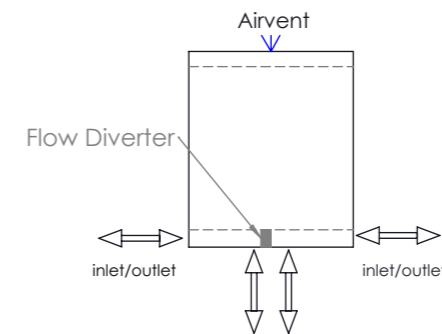


Back View



Top View

Plumbing Position: Vertical

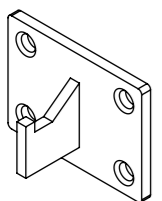


When mounting vertically, please observe that the collector fitted with a flow diverter is mounted at the bottom. This can be verified by visually checking or by referring to the installation diagram

Vertical mount
All Dimensions are in mm
Max. Working Pressure: 10 Bar
Max. Working Temperature: 95° C
Inlet / Outlet : 1/2" BSP
Fuel : E/H/D

Manufacturing Tolerance : - 5 mm

Installation Accessories:



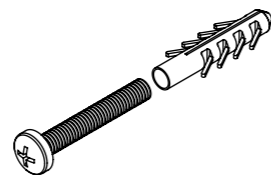
x4



x16



x16



PRODUCT CODE	Height	Length	Depth	Pipe Centres	Bracket Centres	
	H	L	D	C - C1	F - F1	S - S1
	mm	mm	mm	mm	mm	mm
WA106v	1070	550	70	640-50	970-900	450-340
WA166v	1570	550	70	640-50	1470-1400	450-340
WA216v	2070	550	70	640-50	1970-1900	450-340